

GEP WATER BAG SYSTEM

Water bag for storage of rain water



PRODUCT DESCRIPTION

Specifically developed for rainwater utilization, flexible water bag system. Special light-proof material prevents algae formation. The flexible water bag is fitted with fastening rings, fill pipe connection and venting. The water bag includes 4 hanging eyes at the top, a vent of 75 mm at the top and a supply tube of 110 mm at the bottom of the bag.

The plastic shaft is equipped with integrated quiet feed, overflow siphon and flexible suction and a bottom / side connection to which the filling pipe of the flexible water bag can be connected. The shaft is around 31.5 cm, has a Width of 100 cm and the following connections: supply 110 mm, bag connection 110 mm and a built-in overflow siphon of 110 mm.

The water bag consists of a shaft and a storage bag, linked by a bottom connection, so that a communicating vessel is created.

APPLICATION AREA

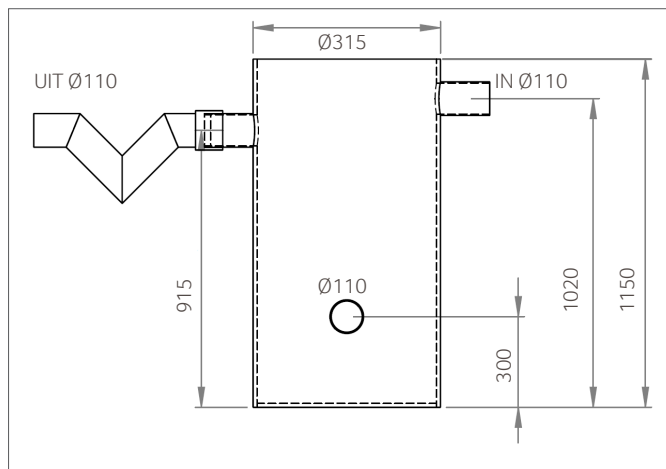
The water bag system is suitable for storing rainwater in cellars or crawl spaces

TECHNICAL DATA GEP WATER BAG SYSTEM

Volume in Liter	Length in cm	Width in cm	Connection below	Connection above
ca. 2.000	200	300	Ø110	Ø75
ca. 4.000	200	600	Ø110	Ø75
ca. 6.000	400	400	Ø110	Ø75
ca. 8.000	400	500	Ø110	Ø75
ca. 10.000	500	500	Ø110	Ø75
ca. 12.000	500	600	Ø110	Ø75
ca. 15.000	600	600	Ø110	Ø75
ca. 20.000	800	600	Ø110	Ø75

SCOPE OF DELIVERY

Product consists of: a water bag with vent, water shaft and siphon tube



ORDERING INFORMATION

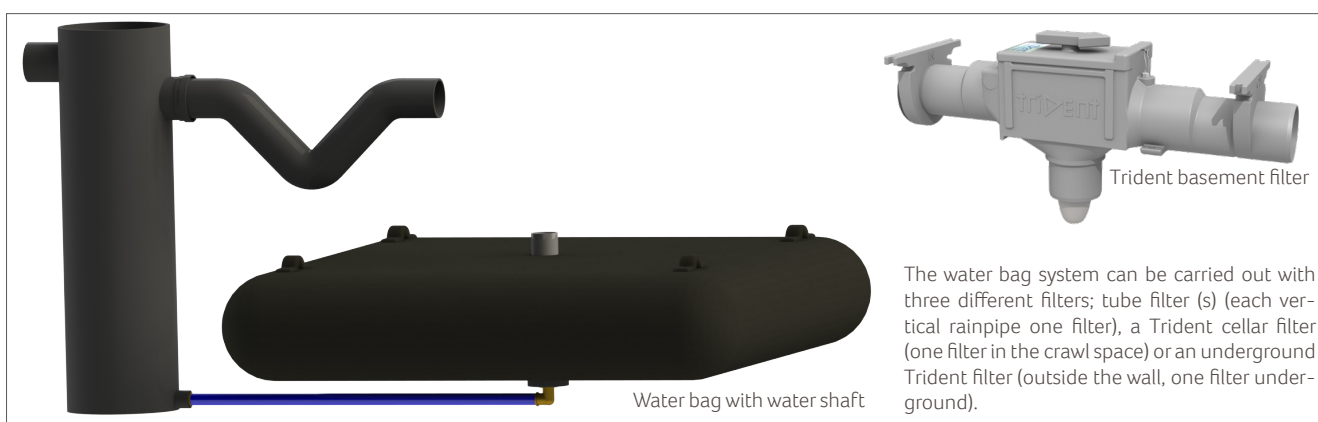
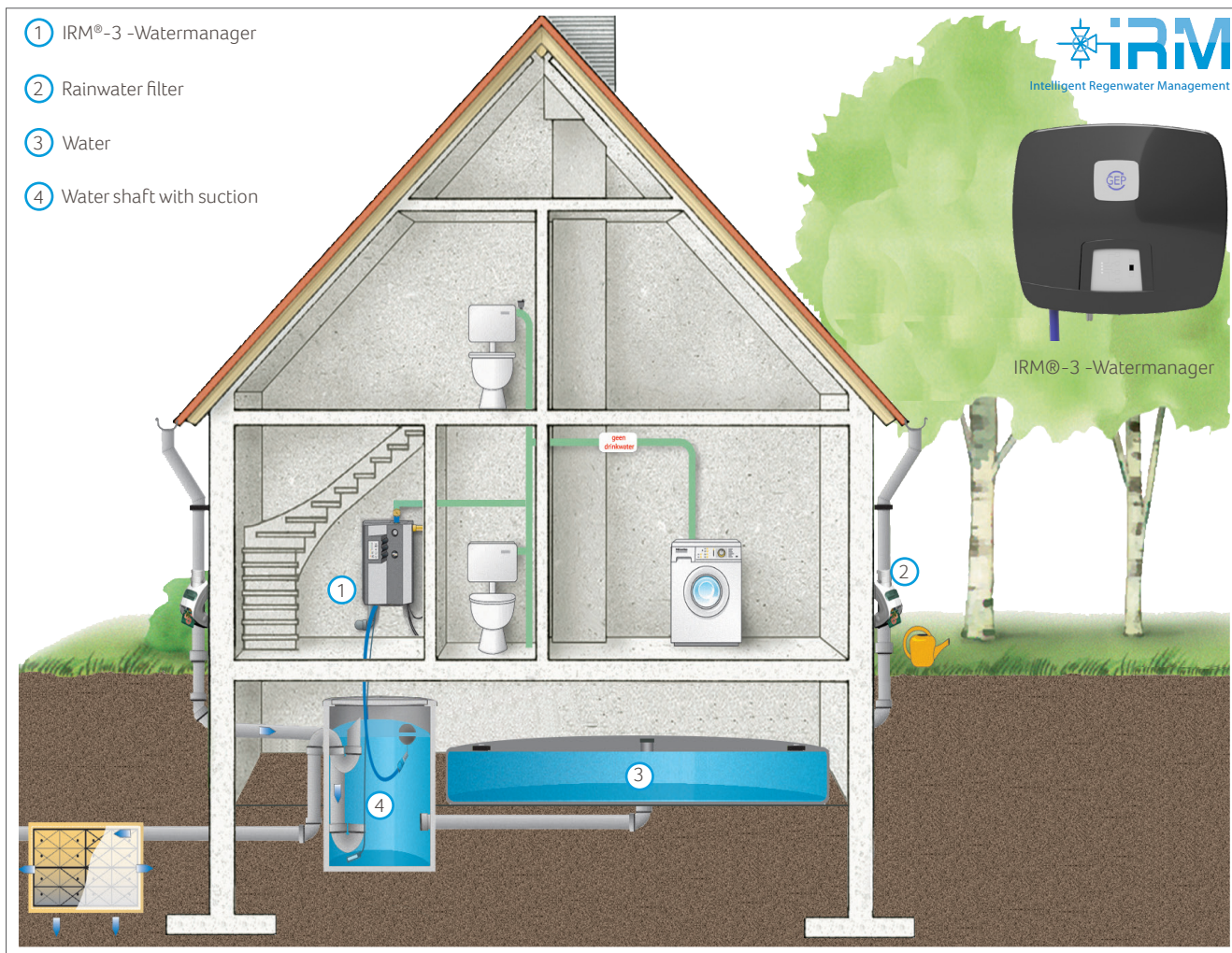
Art.-Nr.	Omschrijving	PG
403701	Water bag 2.000 liter with water shaft	3
403705	Water bag 4.000 liter with water shaft	3
403708	Water bag 6.000 liter with water shaft	3
403710	Water bag 8.000 liter with water shaft	3
403712	Water bag 10.000 liter with water shaft	3
403713	Water bag 12.000 liter with water shaft	3
403714	Water bag 15.000 liter with water shaft	3
403715	Water bag 20.000 liter with water shaft	3
403659	Neoline-Water bag suction set	2
401126	Trident 150 cellar filter	2

TECHNICAL DATA GEP WATER BAG SYSTEM

Connection supply	110 mm
Connection overflow	110 mm
Connection of filling line	110 mm
Diameter shaft	Ø 315 mm
Height shaft	1,150 mm
Material shaft	PE plastic
Material Water bag	black EPDM
Material thickness	1.2 mm
Material fastening rings	plastic
Suction line connection	1" bu

GEP WATER BAGSYSTEM

Flexibel and quick to place



BENEFITS

- Very safe operation thanks to internal supplementation based on EN1717, Belgaqua and KIWA approved
- Quick and easy assembly thanks to plug-in ready delivery
- Extremely quiet operation thanks to sound-deadening design housing and silent float
- Universally applicable thanks to flexible water bag
- Applicable for renovation construction, no excavation work
- Fully automatic and compact thanks to IRM® technology with built-in pump and control
- Customization possible, for cellars and crawl spaces with a hard floor, the water bag and shaft is available with 1" connection for a flexible hose instead of a 110 mm tube.

